

# Ipswich Sporter Class



## Concept

The concept of a Sporter Class is in its infancy in Australia. The movement's philosophy is to cater for shooters of sporting/ hunting rifles that are more commonly available and used by thousands of existing shooters. It provides them with an opportunity to experience the challenges of shooting long ranges in a safe club environment with experienced long range shooters. Ipswich and District Rifle Club has decided to get on board with the movement and will offer this class as a series of standalone events

## Sporter Class Calendar 2019

| Date            | Distance |
|-----------------|----------|
| 9:00am 9/6/19   | 500m     |
| 9:00am 7/7/19   | 400m     |
| 9:00am 8/9/19   | 500m     |
| 9:00am 17/11/19 | 600m     |

Note: The above is subject to change, please confirm by either checking the online calendar or calling.

<http://ipswichrifle.qldrifle.com/calendar-events/>

## What is Ipswich Sporter Class?

String Shooting at a target in the prone position at a known distance.

String shooting is a single shooter taking consecutive shots at a single target.

Prone shooting is laying down on a grass mound. Most people use a shooting mat which can be borrowed from the club.

Targets are electronic and hence no marking is required. Targets are quite large however you will be expected to have your rifle zeroed.

The finished shooter scores for the next shooter, Ipswich members will be happy to help with this process.

The ultimate goal is FUN!



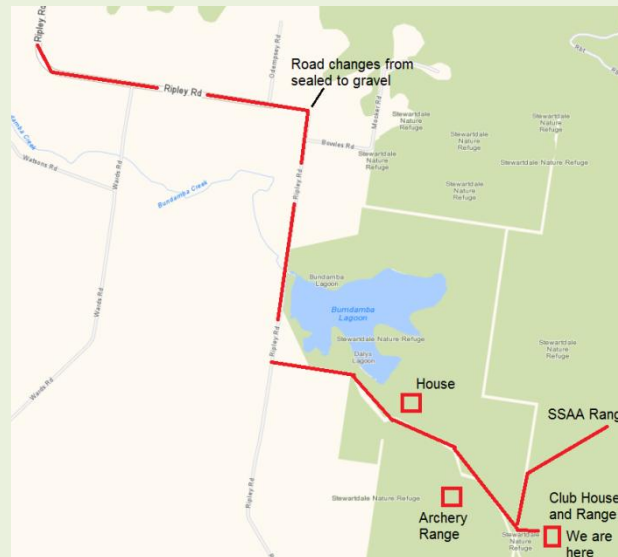
# Ipswich Sporter Class Rules and Information

1. **Cartridge** – Anything up to 8mm as per NRAA rules that also abides by the ranges velocity and muzzle energy rules.
2. **Ammunition** – Any handloaded or factory ammunition up to 8mm.
3. **Optics** – Sights: Any, including magnification or telescopic.
4. **Action** – Bolt action as per NRAA rules.
5. **Trigger** – Any trigger system may be used provided it is safe for example has a trigger guard and doesn't release with vigorous cycling of the bolt.
6. **Front and Rear Rest** – Front rest must be folding type bipod such as Harris or Atlas. The rear rest must be a sand bag.
7. **Brakes and Mags** – Both are permitted however mags can only be inserted when the rifle is in place on the mound and shooter is in the firing position.
8. **Scoring and Course of Fire** – Two rounds of 2 sighters and 10 counting shots in each. Scoring values as per F Class.
9. **Clothing** – Covered in Footware and no Camo clothing. Ear protection must be worn.
10. **Visitors** – Are most welcome to come and see what its all about.

## Location

Ipswich & District Rifle Club is located on the 'Stewartdale', SSAA owned property at Ripley in Ipswich, Queensland, Australia (approximately 40 minutes west of Brisbane).

**Range Address:** Ripley Road Sth Ripley  
'Stewartdale' SSAA Property



GPS Coordinates to Driveway:  
-27.7381626, 152.8315257  
(Put strait into Google Maps)

## Contacts

Please email us with any questions:

idrc@live.com.au

Further information can be found on our website:

<http://ipswichrifle.qldrifle.com>

We also shoot Target Rifle and F Class on Saturday afternoons, full calendar can be found on the website.



